

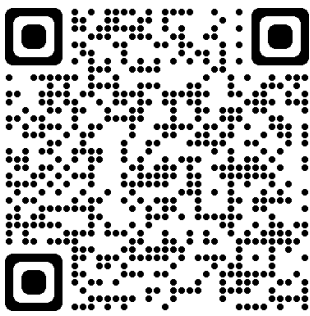
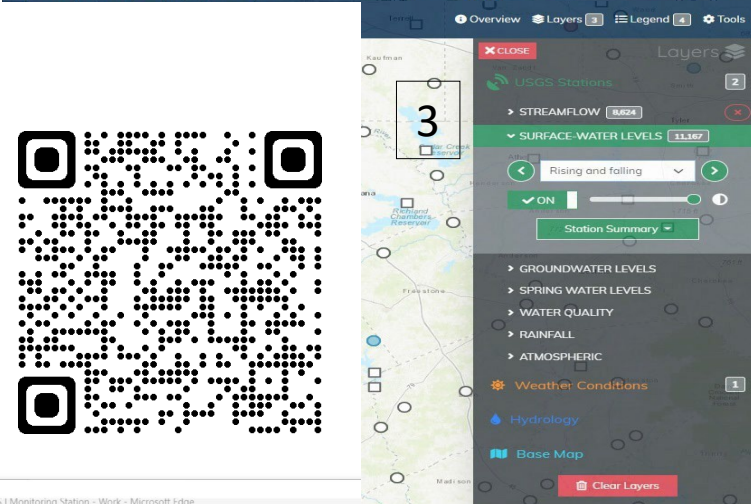
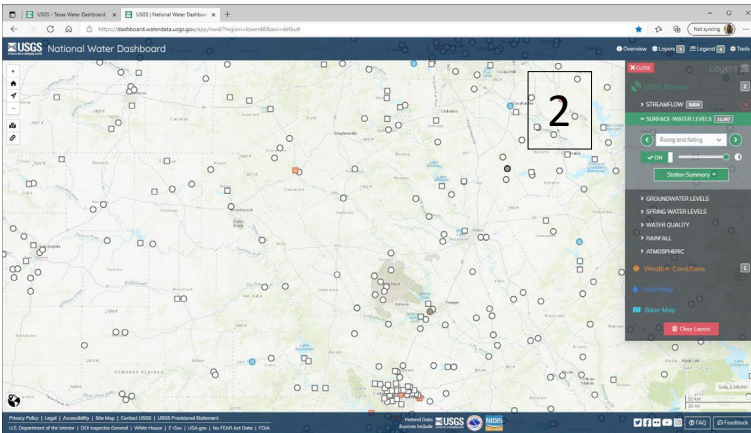
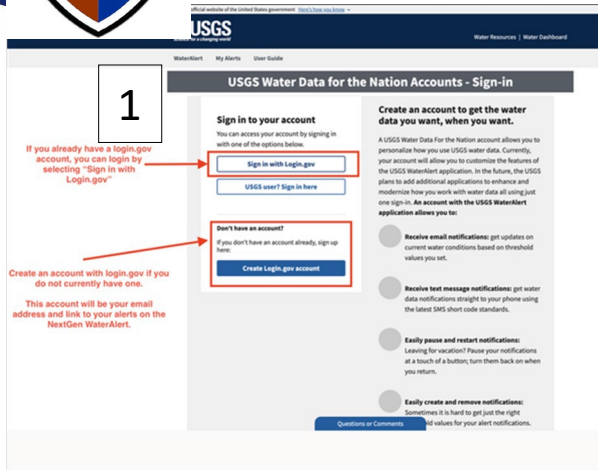


# United States Geologic Survey, National Water Dashboard



Instruction for USGS National Water Dashboard:

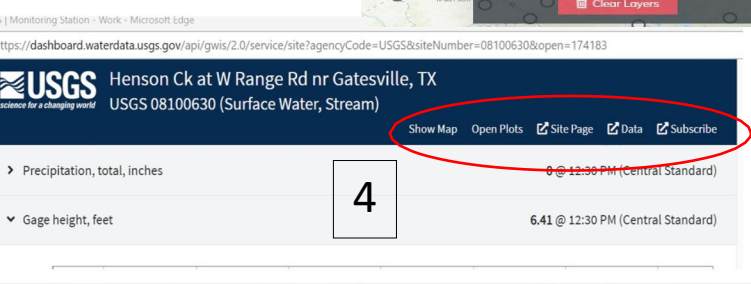
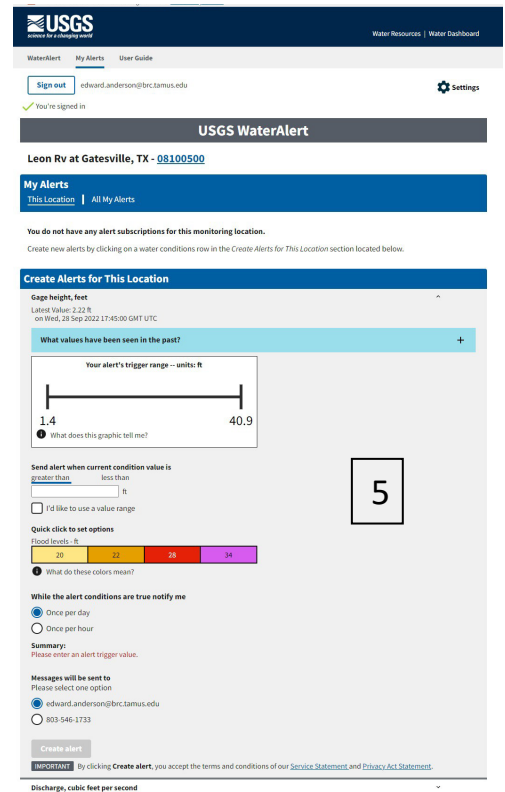
1. Set up an account with [www.login.gov](http://www.login.gov) with username and password or use you Common Access Card (CAC). You will need an email account for setup. Do not sign out (1).
2. Go to <https://dashboard.waterdata.usgs.gov/>. Click on the X after reading the introduction message. (If on smart device enable the GPS function, it will bring you to your location) Zoom in to your area on the map (2).
3. In the top right side of the screen is the functions, Overview, Layers, Legend, and Tools. The Overview explanation how to use the functions and tool on the dashboard. The Layers will show you the different categories of water on the dashboard. The Legend will explain the different symbols and colors on the dashboard (3).
4. To see the gauges on Fort Cavazos, click on layers and go to surface-water levels click on it, if not on click on off button, then click on drop down to rising and falling, give it a minute and that layer will become visible (4).
5. Click on gauge location you want to view. A popup will appear with the gauge location, precipitation, gauge height (stream height) with a graph for the last seven days. Also subscribe to water alert for this gauge, show on map, site page, and data (5).



Open or close Plots, this function will open all graphs on this page.

Site Page, this opens the page for the selected gauge, all graphs, metadata, hydrograph data and summary of available data are available.

Subscribe link will let you enroll to receive emails or texts messages Water Alerts. There are two things that you will need, an email address, and cellular phone. You can subscribe to stream height, precipitation, and other thing that may be recorded by that gauge.



Blackland Research & Extension Center Water Science Laboratory  
 720 E. Blackland Rd, Temple, TX 76502 | [blackland.tamu.edu](http://blackland.tamu.edu) |  
 254-774-6000

